



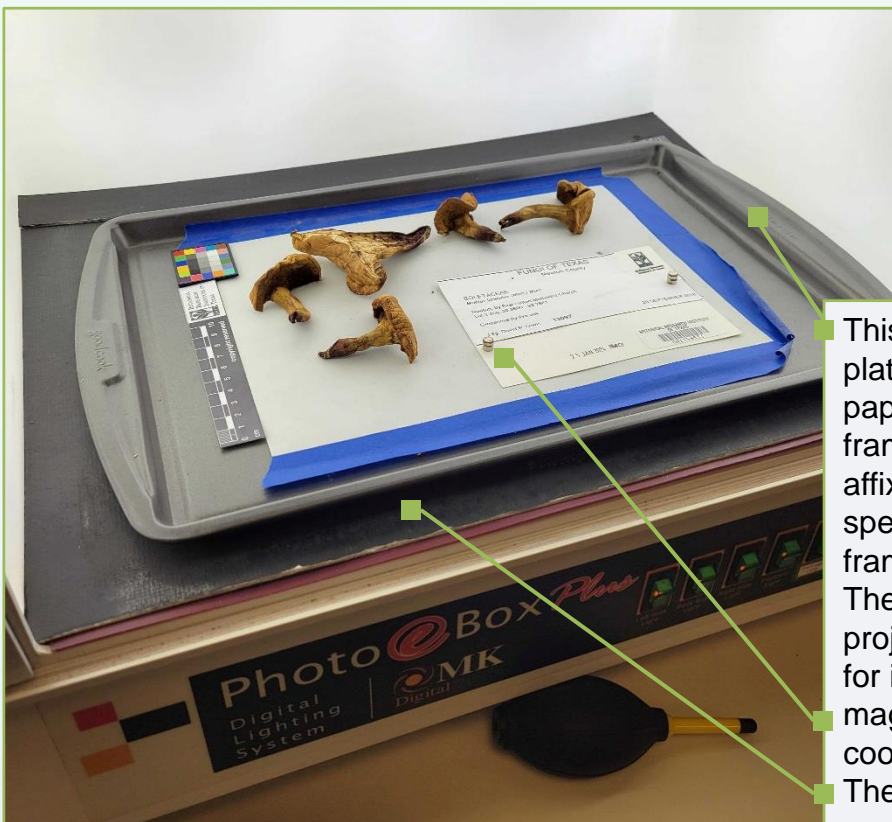
Imaging a Fungarium

Jessica Lane

Botanical Research Institute of Texas at the Fort Worth Botanic Garden

jlane@fwbg.org

The layout



A Canon EOS 5D Mark II camera is mounted on a stand that can be raised and lowered with a crank (above the frame of this image). The camera was lowered for this project.

At the Philecology herbarium, our imaging efforts are focused primarily on the vascular plant collection. As the largest of our collections, it receives the most attention. When deciding to image other collections, we had to adjust our methods. Previous efforts were spotty and lacked a clear protocol. By changing our methods and adding a few simple materials, we began imaging the fungi collection, and using a similar procedure to image the lichen and bryophyte collections.

This magnetic cooking tray is used as a platform for imaging, with an off-white paper background surrounded by a taped frame. A scale bar and color bar are affixed to the tray. The label and specimen material are laid out within the frame.

The biggest struggle when starting this projects was labels that would not lay flat for imaging. We solved this by using magnets to hold labels flat against the cooking tray.

The lower surface is the original platform used to image vascular plant specimens, inside a Photo eBox Plus light box.

Special thanks to Charles Gardner and Billy Stone for their contributions to imaging procedures.

The result

