



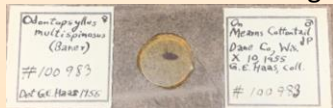
# Downstream Tools and Contributions to Biodiversity Data Standards within the Terrestrial Parasite Tracker Thematic Collections Network



Kathryn A. Sullivan<sup>1,2\*</sup>, Erika M. Tucker<sup>2,3</sup>, Nicolas J. Dowdy<sup>2</sup>, Julie M. Allen<sup>4</sup>, Vijay Barve<sup>5,6</sup>, James H. Boone<sup>1</sup>, Sarah E. Bush<sup>7</sup>, Neal L. Evenhuis<sup>8</sup>, Michael Hastriter<sup>9</sup>, Jessica E. Light<sup>10</sup>, Teresa Mayfield-Meyer<sup>11</sup>, Barry M. O'Connor<sup>12</sup>, Jorrit H. Poelen<sup>13,14</sup>, Gabor R. Racz<sup>15</sup>, Katja C. Seltmann<sup>14</sup>, Jennifer M. Zaspel<sup>1,2</sup>

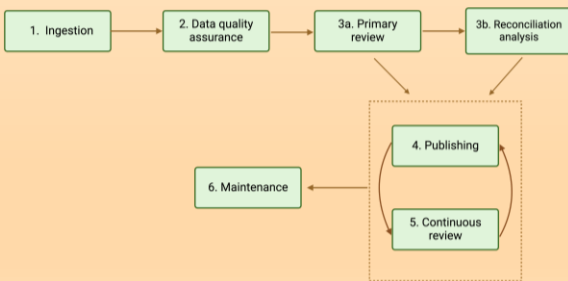
## BACKGROUND

Digitization requires extensive curation and pre-cleaning of taxonomic names, particularly for understudied and diverse groups

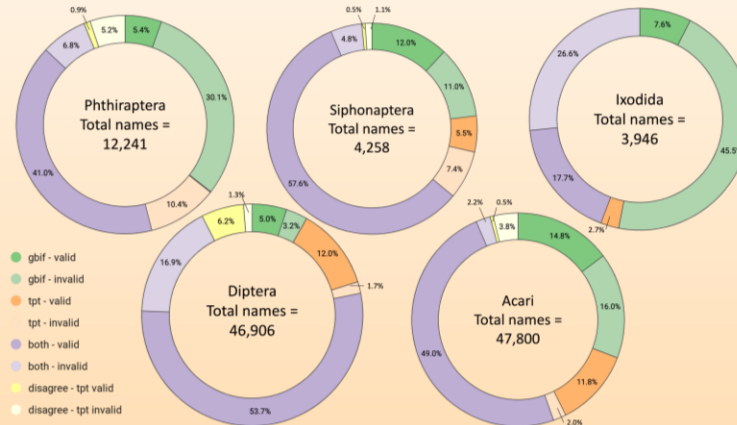


From MPM ENT collection

## TAXONOMY RECONCILIATION WORKFLOW



## RESULTS

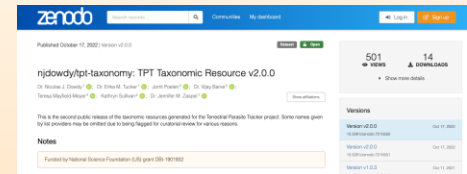


Step 3b. Reconciliation Analysis

**Table 1.** TPT Taxonomic Names Lists from the TPT Taxonomic Resource v1 with number of total names, original expert sources, and steps completed in the TPT Taxonomy Workflow

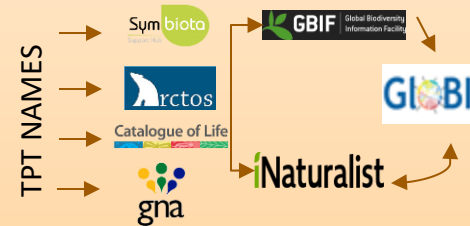
Taxon list	Number of names	Sources	Steps completed in workflow
Non-Ixodida Acari	30,148	University of Michigan	1-4
Siphonaptera	3,794	Lewis World Species List; Brigham Young University	1-4, 5 in progress
Phthiraptera	7,728	TPT Louse Experts	1-4, 5 in progress
Ixodida	969	US National Tick Collection; Georgia Southern University	1-4
Diptera	~40,000	Systema Dipterorum/Bishop Museum, Adler Simuliidae Collection/CUAC, ITIS	1-3
Vertebrate Hosts	33,674 birds; 7,894 mammals	University of Florida	1-2,4 (outside of TPT taxonomy experts)

## SUSTAINABILITY



Step 4. Publishing to Zenodo and updating GitHub

## DATA INTEGRATION



## ACKNOWLEDGEMENTS

This work was supported by National Science Foundation (US) grants DBI-1901932 to JMZ, DBI-1901926 to KCS, DBI-1902031 to JMA, DBI-1811897 to NJD, DBI1902023 to SEB, DBI-1901916 to JEL, DBI-1902113 to BMO, DBI-1901928 to NLE, DBI-1902048 supported MHR and DBI-1901911 supported GRR.

Check out our paper in *Insect Systematics and Diversity*!



<sup>1</sup>Department of Biological Sciences, Marquette University, Milwaukee, WI, USA, <sup>2</sup>Department of Zoology, Milwaukee Public Museum, Milwaukee, WI, USA, <sup>3</sup>Biodiversity Outreach Network, Flagstaff, AZ, USA, <sup>4</sup>Department of Biological Sciences, Virginia Tech, Blacksburg, VA, USA, <sup>5</sup>Marine Biodiversity Center, Natural History Museum of Los Angeles County, Los Angeles, CA, USA, <sup>6</sup>Department of Entomology, Purdue University, West Lafayette, IN, USA, <sup>7</sup>School of Biological Sciences, University of Utah, Salt Lake City, UT, USA, <sup>8</sup>Department of Entomology, Bishop Museum, Honolulu, HI, USA, <sup>9</sup>Montel Bean Life Science Museum, Brigham Young University, Provo, UT, USA, <sup>10</sup>Department of Ecology and Conservation Biology, Texas A&M University, College Station, TX, USA, <sup>11</sup>Museum of Southwestern Biology, The University of New Mexico, Albuquerque, NM, USA, <sup>12</sup>Museum of Zoology, Insect Collection, University of Michigan, Ann Arbor, MI, USA, <sup>13</sup>Rain Institute, Montclair, NJ, USA, <sup>14</sup>Desale Center for Biodiversity and Ecological Restoration, University of California Santa Barbara, Santa Barbara, CA, USA, <sup>15</sup>University of Nebraska State Museum, Harold W. Manter Laboratory of Parasitology, Lincoln, NE, USA

